

Clients

*BP
Anadarko
Murphy Oil
Magellan Midstream Partners
KBR
Baker Hughes
ConocoPhillips
Unocal
Rohm&Haas
Texas Genco
Duke Energy
Lubrizol
Precision Drilling
EnerVest
Duke Energy International
Cobalt International
Spectra Energy
DCP Midstream
Solvay
McKechnie Plastics
Metropolitan Airports Commission
Northern States Power
Merial Ltd
Lockheed Martin
Riverwood International
Cryovac
BBA Nonwovens
AlliedSignal Inc.
Dupont
Sterling Chemicals
Goodman
Canadian Pacific Rail Systems
Shell
South Carolina Electric & Gas
Brown & Williamson
Alliant Tech
Wild Well Control
Eagle Rock Energy
V&M Star
VAM Drilling*

ATIYA SYVERSON, MS, CIH, CSP, CPE

*Certified Industrial Hygienist
Certified Safety Professional
Certified Professional Ergonomist*

**Prevent
Recognize
Evaluate
Control
Protect**



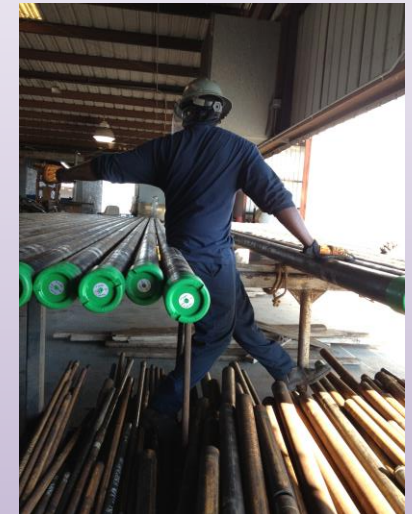
Ash Health & Safety LLC
A Minority & Woman Owned Business

**5719 Ashford Ridge Lane
Katy, TX 77450
(Houston)
atiasyverson@att.net**

281/961-0389

Ash Health & Safety LLC

**Safety
Industrial Hygiene
Ergonomics**



**Protecting Your Workforce
& Workplace**

Safety is Good Business

Ash Health & Safety LLC

We have a highly qualified and experienced staff who will work closely with you. Our aim is to help you achieve your health and safety goals.

Your priorities are our priorities.

Ash Health & Safety LLC was founded by **Atiya Syverson, MS, CIH, CSP, CPE.**

With over 25 years' experience in industry and consulting, we provide high quality and cost effective support to all clients. References are available upon request.

Technical Services

Industrial Hygiene Monitoring

- *Air sampling and analysis*
- *Real time air monitoring*
- *Noise monitoring*
- *Employee exposure evaluations*

Ergonomic Assessments

- *Facility operations*
- *Office environments*

Indoor Air Quality Investigations

- *On site investigation and assessment of common indoor air contaminants (chemical or biological)*
- *Assessment of building air flow and ventilation*
- *Identification of outdoor and indoor causes of inadequate indoor air quality*

Audits/Inspections

- *To identify hazards to personnel and property*
- *To identify non-compliance with applicable regulations*
- *To identify non-conformance with company policies and procedures*
- *To identify areas for improving facility safety performance*

Emergency Response

- *Immediate technical support by a Certified Industrial Hygienist or a Certified Safety Professional*
- *Develop safety processes including air monitoring needs, personal protective equipment, etc.*
- *Continuing hazard analysis during the event*

Program/Process Development

- *Develop safety procedures/processes*
- *Training manuals and presentation materials*
- *Review and update current procedures & processes for compliance with regulation and conformance with company policies.*



Training

On-site technical training conducted by a Certified Industrial Hygienist or Certified Safety Professional

- *10 & 30 Hour General Industry OSHA Outreach Training Program*
- *10 & 30 Hour Construction OSHA Outreach Training Program*
- *Confined Space Entry*
- *Lock out Tag out (Electrical Safety)*
- *Machine Guarding*
- *Hazard Recognition*
- *Lead Awareness*
- *40 Hour HAZWOPER*
- *8 Hour HAZWOPER Refresher*
- *Hazard Communication (GHS)*
- *Hearing Conservation*
- *Construction Safety*
- *Back Safety*
- *Office Ergonomics*
- *Facility Ergonomics*
- *Respiratory Protection*
- *Fall Protection*
- *Plant safety*
- *Etc.*

Ash Health & Safety LLC

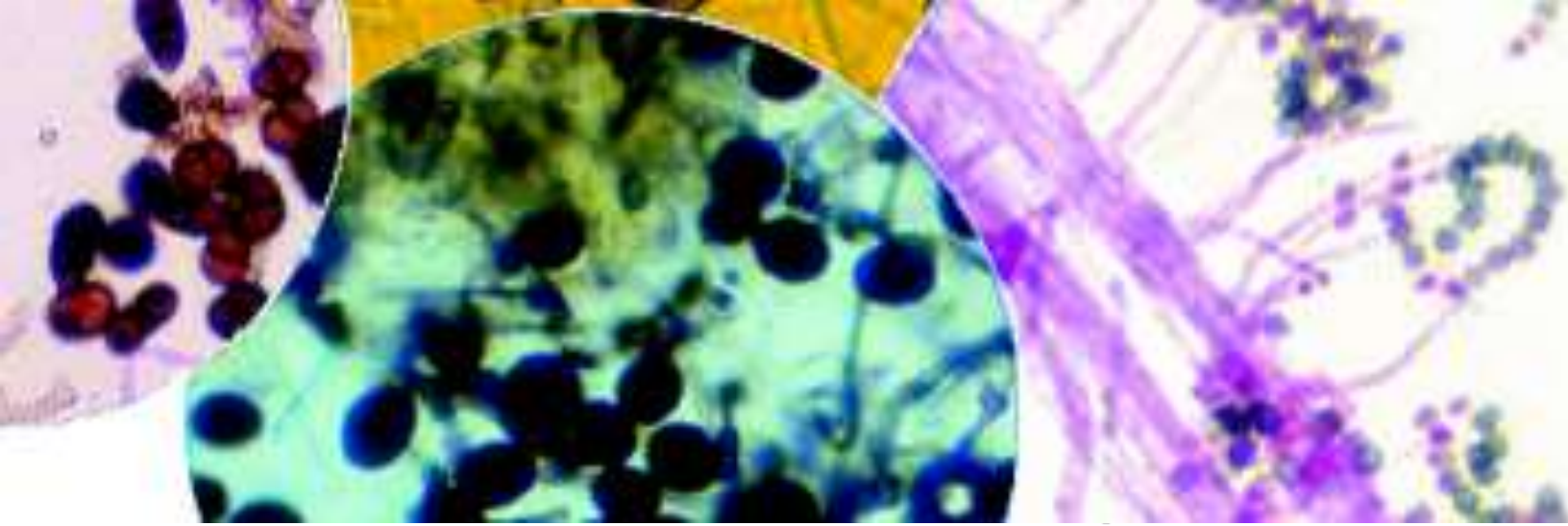
5719 Ashford Ridge Lane

Katy, TX 77450

(Houston)

281/961-0389

atiyasyverson@att.net



Industrial Hygiene • Safety • Ergonomics

MOLD INSPECTION AND TESTING

Call 281/961-0389

**Fully Insured, TX Licensed,
Mold Assessment Consultant**

**A flooded home requires a mold clearance certificate
for future sale of the home. Call for professional,
reasonably priced, excellent service.**

